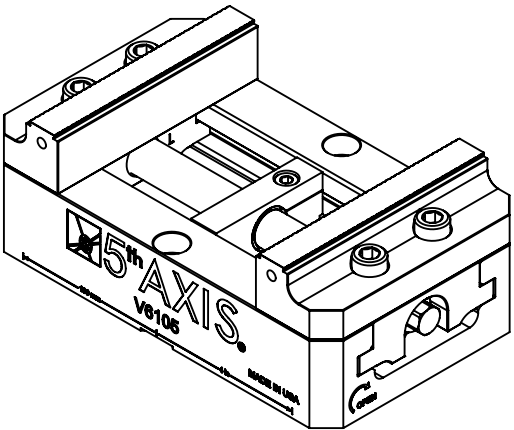


8 7 6 5 4 3 2 1

TECHNICAL DATA	V6105
JAW LENGTH	149.86MM
MAXIMUM CLAMPING FORCE	26.7 kN @ 100 Nm
CLAMPING RANGE STANDARD	0 - 165.86MM
CLAMPING RANGE REVERSED	83.82 - 254MM
SELF-CENTERING ACCURACY	±0MM

V6105



D

D

C

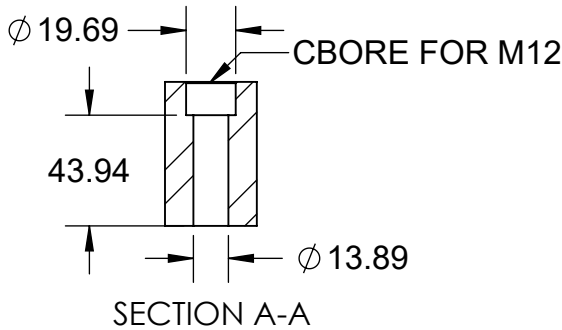
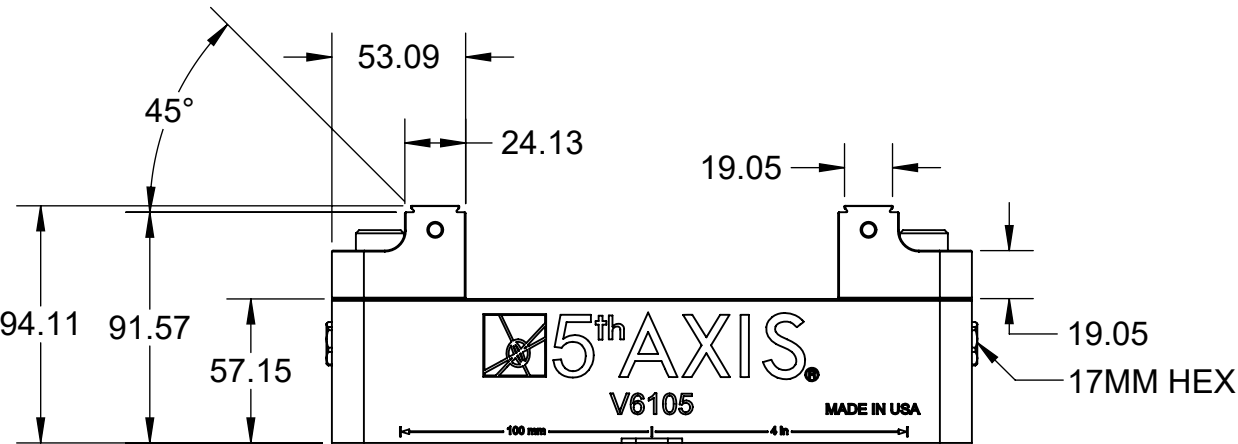
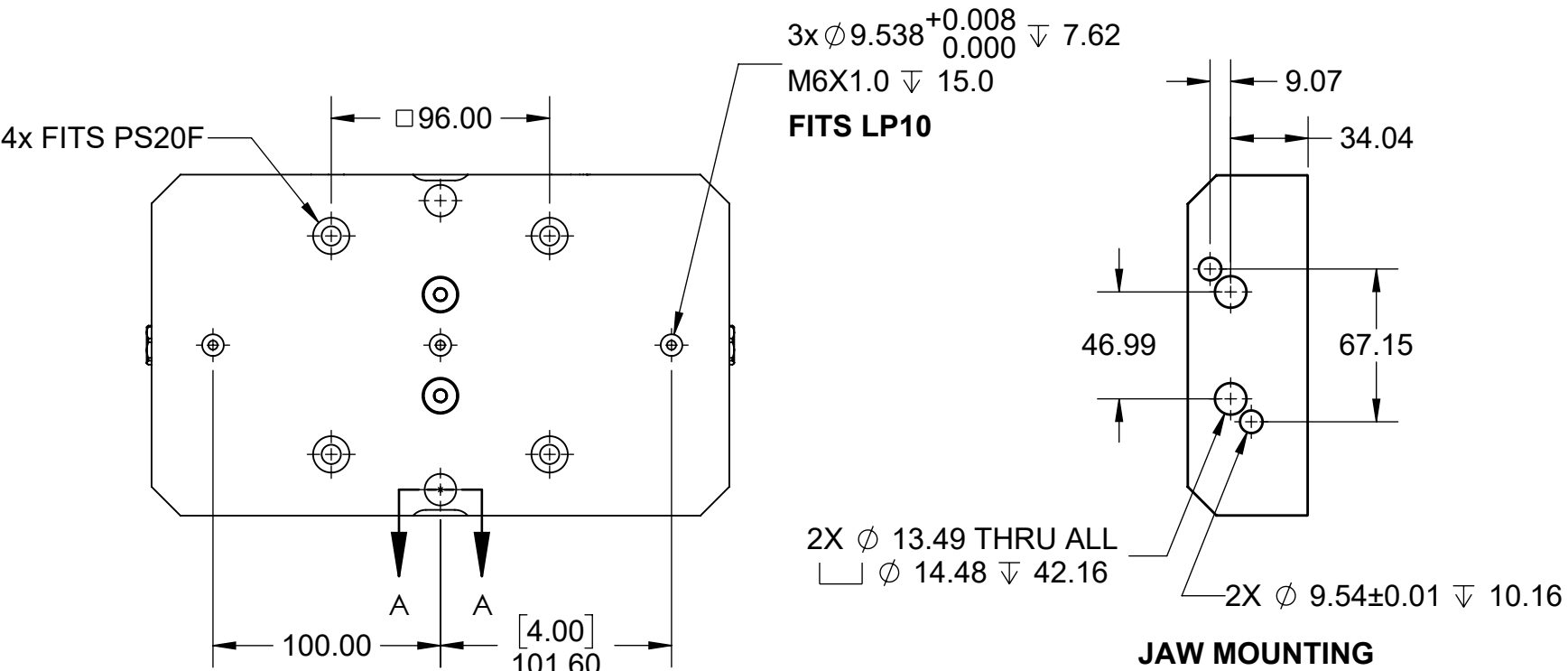
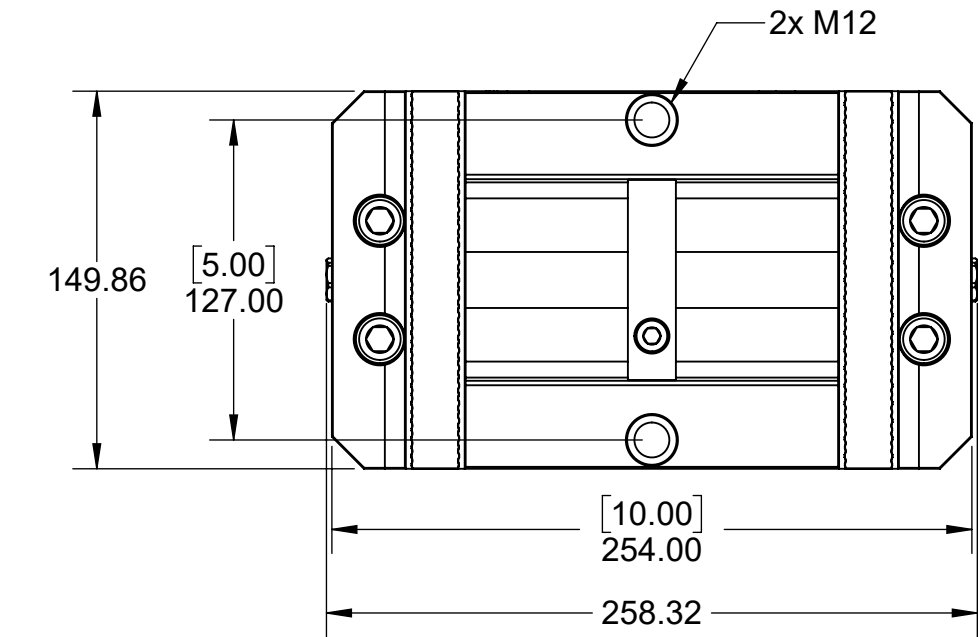
C


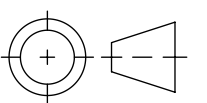
B

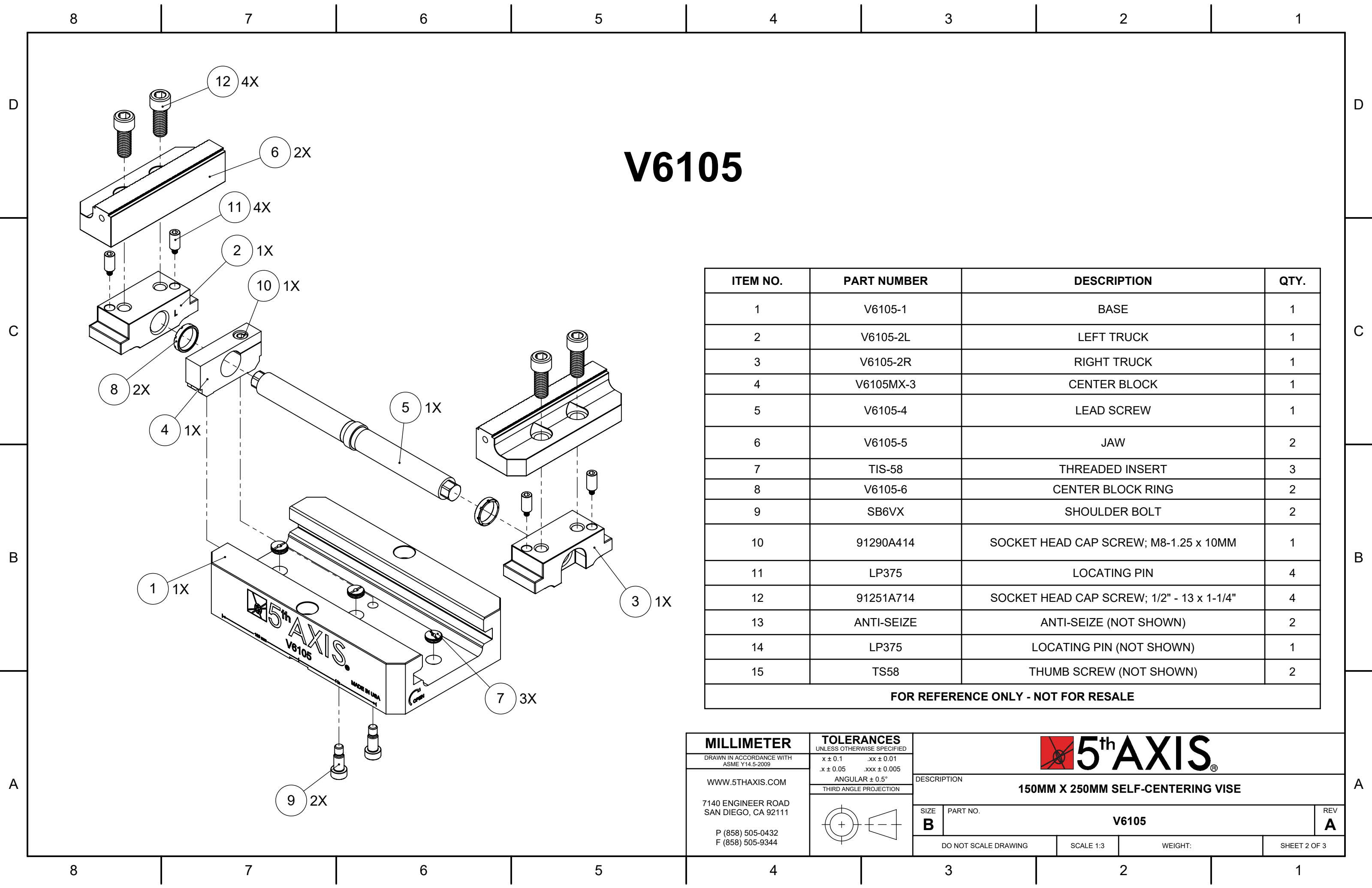
B

A

A



MILLIMETER		TOLERANCES UNLESS OTHERWISE SPECIFIED		 5 th AXIS®			
DRAWN IN ACCORDANCE WITH ASME Y14.5-2009		x ± 0.1 .xx ± 0.01 .x ± 0.05 .xxx ± 0.005 ANGULAR ± 0.5°		DESCRIPTION			
WWW.5THAXIS.COM		THIRD ANGLE PROJECTION		150MM X 250MM SELF-CENTERING VISE			
7140 ENGINEER ROAD SAN DIEGO, CA 92111 P (858) 505-0432 F (858) 505-9344				SIZE	PART NO.		REV
				B	V6105		A
				DO NOT SCALE DRAWING		SCALE 1:3	WEIGHT:



V6105

ITEM NO.	PART NUMBER	DESCRIPTION	QTY.
1	V6105-1	BASE	1
2	V6105-2L	LEFT TRUCK	1
3	V6105-2R	RIGHT TRUCK	1
4	V6105MX-3	CENTER BLOCK	1
5	V6105-4	LEAD SCREW	1
6	V6105-5	JAW	2
7	TIS-58	THREADED INSERT	3
8	V6105-6	CENTER BLOCK RING	2
9	SB6VX	SHOULDER BOLT	2
10	91290A414	SOCKET HEAD CAP SCREW; M8-1.25 x 10MM	1
11	LP375	LOCATING PIN	4
12	91251A714	SOCKET HEAD CAP SCREW; 1/2" - 13 x 1-1/4"	4
13	ANTI-SEIZE	ANTI-SEIZE (NOT SHOWN)	2
14	LP375	LOCATING PIN (NOT SHOWN)	1
15	TS58	THUMB SCREW (NOT SHOWN)	2
FOR REFERENCE ONLY - NOT FOR RESALE			

MILLIMETER

DRAWN IN ACCORDANCE WITH
ASME Y14.5-2009

WWW.5THAXIS.COM

7140 ENGINEER ROAD
SAN DIEGO, CA 92111

P (858) 505-0432
F (858) 505-9344

TOLERANCES
UNLESS OTHERWISE SPECIFIED

x ± 0.1

.xx ± 0.01

.x ± 0.05

.xxx ± 0.005

ANGULAR ± 0.5°

THIRD ANGLE PROJECTION

DESCRIPTION

150MM X 250MM SELF-CENTERING VISE

SIZE

B

PART NO.

V6105

REV

A

DO NOT SCALE DRAWING

SCALE 1:3

WEIGHT:

SHEET 2 OF 3