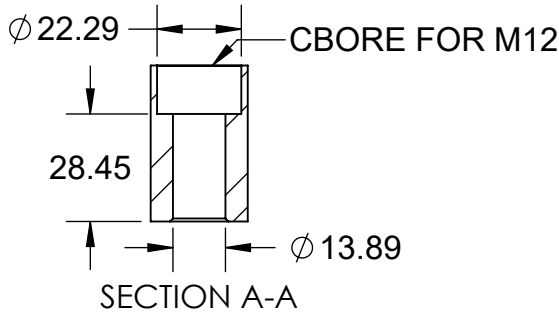
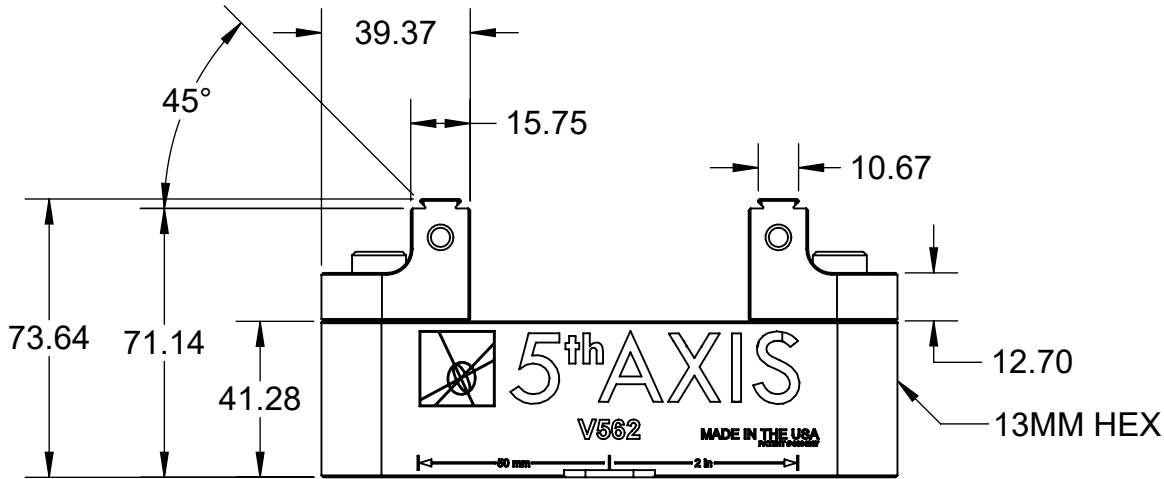
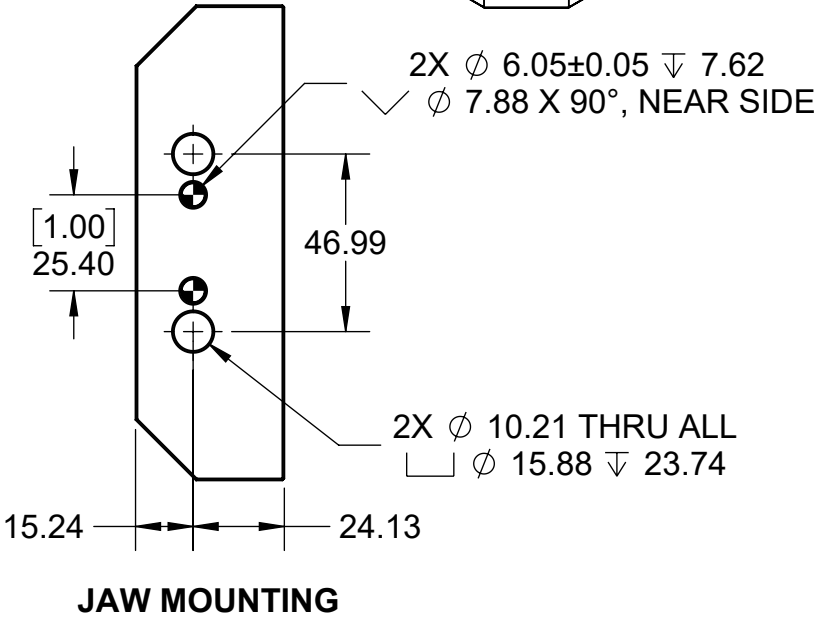
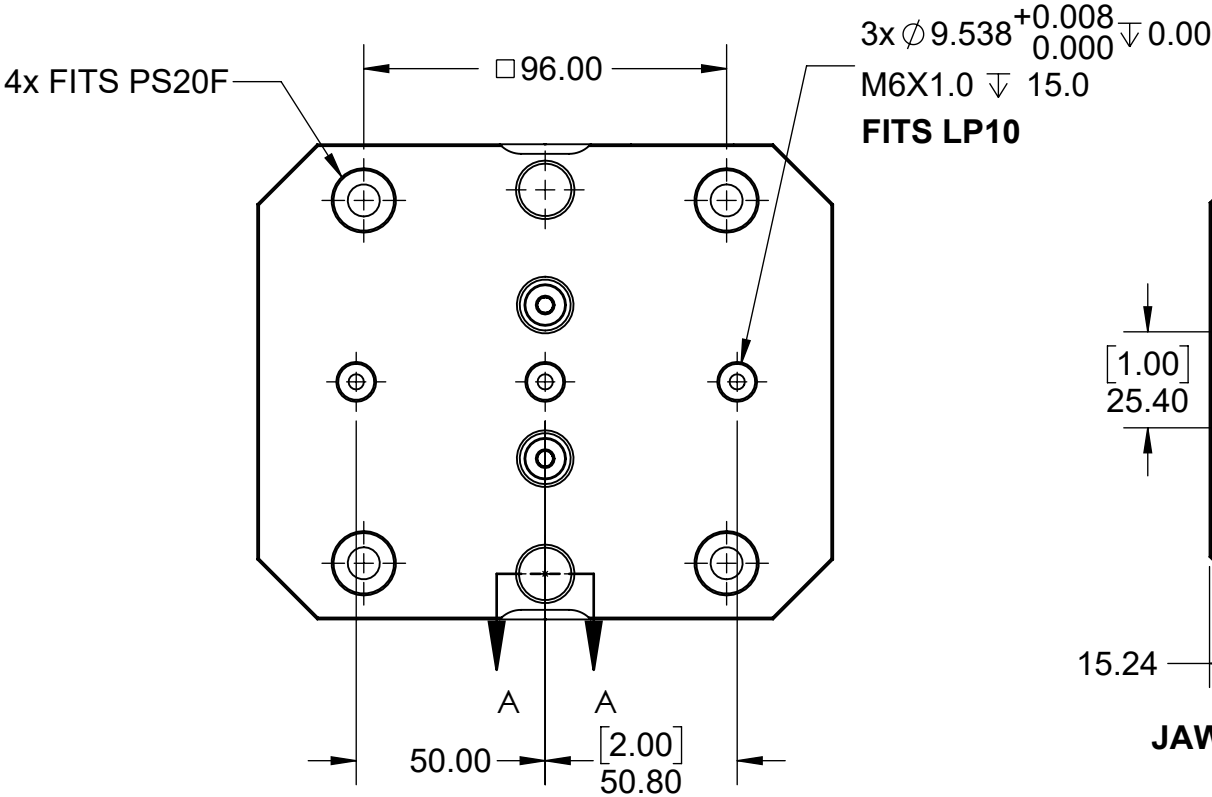
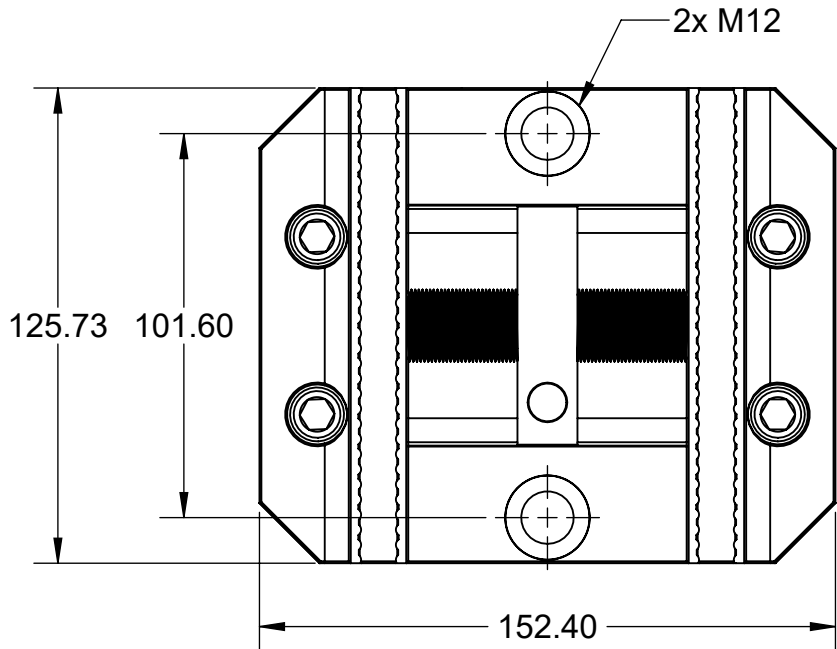
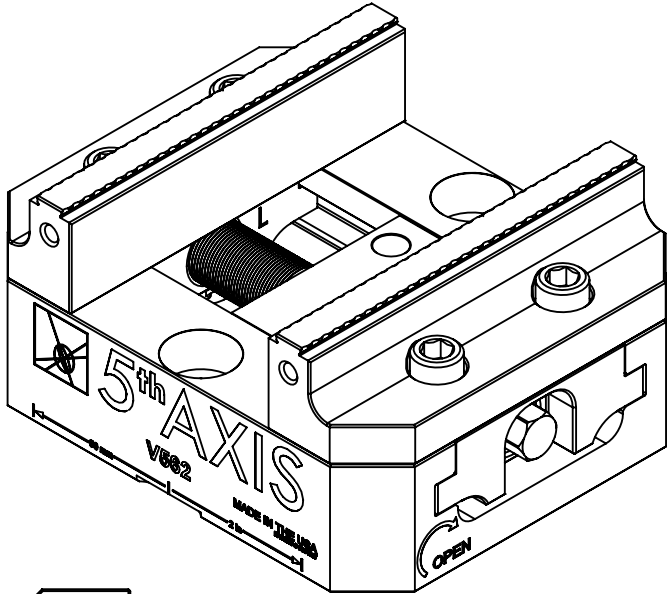

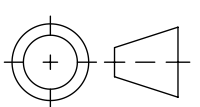
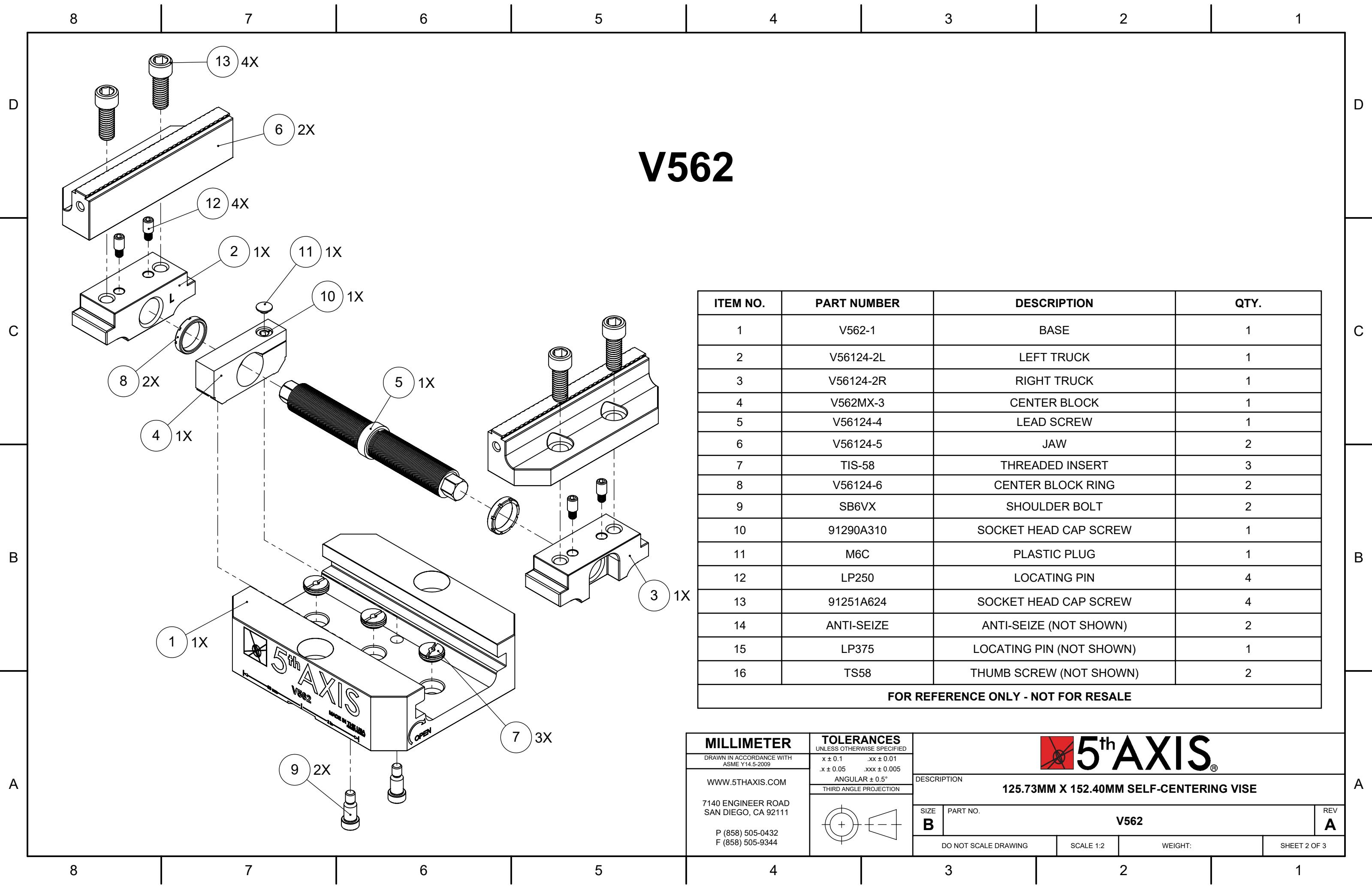


TECHNICAL DATA	V562
JAW LENGTH	125.73MM
MAXIMUM CLAMPING FORCE	20 kN @ 75 Nm
CLAMPING RANGE STANDARD	0 - 91.69MM
CLAMPING RANGE REVERSED	73.40 - 156.72MM
SELF-CENTERING ACCURACY	± 0 MM

V562



<b>MILLIMETER</b>		<b>TOLERANCES</b> UNLESS OTHERWISE SPECIFIED				
DRAWN IN ACCORDANCE WITH ASME Y14.5-2009		x ± 0.1 .xx ± 0.01 .x ± 0.05 .xxx ± 0.005 ANGULAR ± 0.5°		DESCRIPTION		
WWW.5THAXIS.COM		THIRD ANGLE PROJECTION		125.73MM X 152.40MM SELF-CENTERING VISE		
7140 ENGINEER ROAD SAN DIEGO, CA 92111				SIZE	PART NO.	REV
P (858) 505-0432 F (858) 505-9344				<b>B</b>	<b>V562</b>	<b>A</b>
		DO NOT SCALE DRAWING		SCALE 1:2	WEIGHT:	SHEET 1 OF 3



V562

ITEM NO.	PART NUMBER	DESCRIPTION	QTY.
1	V562-1	BASE	1
2	V56124-2L	LEFT TRUCK	1
3	V56124-2R	RIGHT TRUCK	1
4	V562MX-3	CENTER BLOCK	1
5	V56124-4	LEAD SCREW	1
6	V56124-5	JAW	2
7	TIS-58	THREADED INSERT	3
8	V56124-6	CENTER BLOCK RING	2
9	SB6VX	SHOULDER BOLT	2
10	91290A310	SOCKET HEAD CAP SCREW	1
11	M6C	PLASTIC PLUG	1
12	LP250	LOCATING PIN	4
13	91251A624	SOCKET HEAD CAP SCREW	4
14	ANTI-SEIZE	ANTI-SEIZE (NOT SHOWN)	2
15	LP375	LOCATING PIN (NOT SHOWN)	1
16	TS58	THUMB SCREW (NOT SHOWN)	2
FOR REFERENCE ONLY - NOT FOR RESALE			

MILLIMETER

DRAWN IN ACCORDANCE WITH  
ASME Y14.5-2009

WWW.5THAXIS.COM

7140 ENGINEER ROAD  
SAN DIEGO, CA 92111

P (858) 505-0432  
F (858) 505-9344

TOLERANCES  
UNLESS OTHERWISE SPECIFIED

x ± 0.1

.xx ± 0.01

.x ± 0.05

.xxx ± 0.005

ANGULAR ± 0.5°

THIRD ANGLE PROJECTION

125.73MM X 152.40MM SELF-CENTERING VISE

DESCRIPTION

SIZE  
B

PART NO.  
V562

REV  
A

DO NOT SCALE DRAWING

SCALE 1:2

WEIGHT:

SHEET 2 OF 3